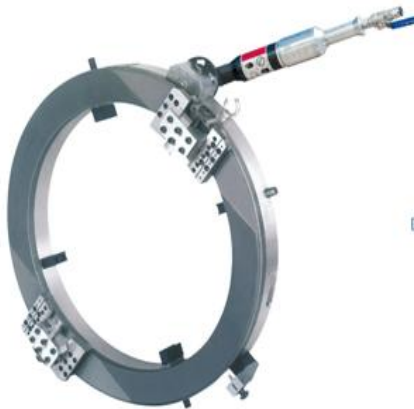


Pipe Cutting & Beveling Machines

RANGE: ϕ 25-1220 mm (1"-48"),O.D

FUNCTIONS : PIPE COLD CUTTING
BEVELING FACING
COUNTERBORING
FLANGE FACING

MATERIALS: ANY KIND OF STEEL
OR EXOTIC ALLOY
POWER: ELECTRIC,PENUMATIC
OR HYDRAULIC

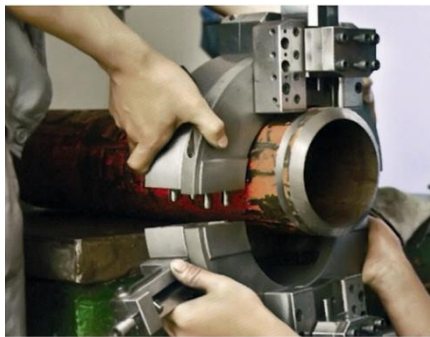


Pneumatic version pipe cutting & beveling machine, compact structure, easy to install because of the lightweight and low clearance.

Cutting and beveling the pipe at the same time or only cutting.

Motor mounted flange are available in straight back(in-line),right angle and front drive reversible options

**Pneumatic ,Electric, Hydraulic Drive
All is available.**



Split frame technology, easy to install the machine at any point along the pipelines. Used on the pipeline construction site, beveling process for the all sizes of pipes & pressure vessels & steam generator. Out-mounted, clamping by multipoint jaws. Clamshells accept a wide range of accessories to increase performance and expand machine capabilities.

TECHNICAL DATA

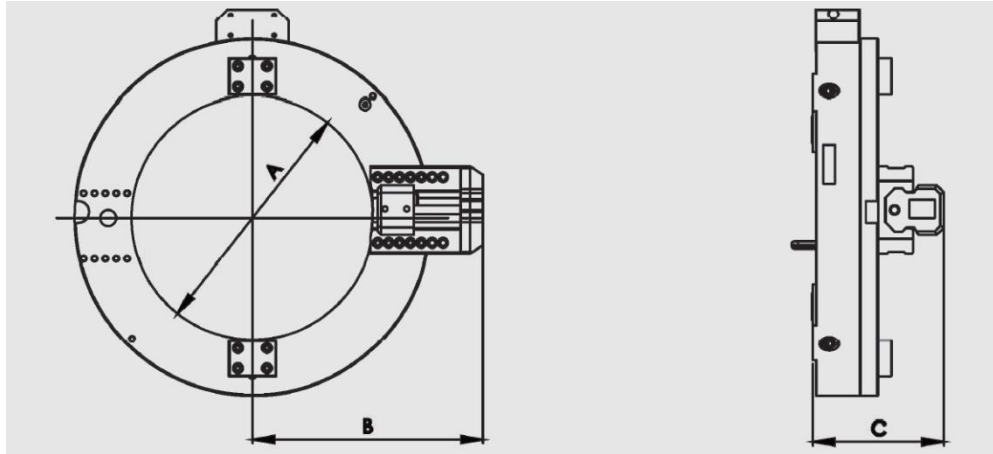
		168	219	273	323	355	406	457	508
Range	OD	inchs 1" -6"	2" -8"	4" -10"	6" -12"	8" -14"	10" -16"	12" -18"	14" -20"
Working range OD	mm	25-168	50-219	114-273	168-323	177-355	254-406	323-457	355-508
Pneumatic motor power	watt	1020	1020	1020	1020	1350	1350	1350	2200
Air consumption flux	l/min	0.6	0.7	0.7	0.7	0.7	0.7	0.7	0.8
Air working pressure	mpa	1600	1600	1800	3000	3000	3000	3000	3000
Electric motor power	watt	1430	1430	1430	1430	1430	1430	1430	*
Voltage	volt	220	220	220	220	220	220	220	*
Frequency	hertz	50	50	50	50	50	50	50	*
Oil working pressure	mpa	*	*	16	16	16	16	16	16
Oil flow rate	l/min	*	*	25	25	25	25	25	25
Output torque	n.m	*	*	260	260	260	260	260	260
Ideal speed	rpm	24	23	23	23	23	22	20	20

		559	610	762	914	1066	1160	1240	1300
Range	OD	inchs 16" -22"	18" -24"	24" -30"	30" -36"	36" -42"	38" -44"	40" -48"	45" -51"
Working range OD	mm	406-559	457-610	609-762	762-914	914-1066	980-1160	1040-1240	1040-1240
Pneumatic motor power	watt	2200	2200	2200	2200	3000	3000	3000	3000
Air consumption flux	l/min	0.8	0.8	0.8	0.8	0.9	0.9	0.9	0.9
Air working pressure	mpa	3000	3000	3000	3000	3000	3000	3000	3000
Electric motor power	watt	*	*	*	*	*	*	*	*
Voltage	volt	*	*	*	*	*	*	*	*
Frequency	hertz	*	*	*	*	*	*	*	*
Oil working pressure	mpa	16	16	16	16	16	16	16	16
Oil flow rate	l/min	25	25	25	25	25	25	25	25
Output torque	n.m	260	260	260	260	260	260	260	260
Ideal speed	rpm	14	14	13	11	10	9	9	8

ON-SITE



DIMENSION AND SIZES



	168	219	273	323	355	406	457	508
A(mm)	180	227	281	333	365	420	470	516
B(mm)	235	260	89	318	331	361	386	409
C(mm)	190	195	195	195	195	195	195	195
	559	610	762	914	1066	1160	1240	1300
A(mm)	565	620	770	930	1080	1170	1240	1306
B(mm)	434	461	536	623	698	802	837	870
C(mm)	195	195	195	195	195	195	215	215

FEATURES:

Split frame technology, easy to install in pipeline.

Out-mounted, clamped by multipoint jaws.

Cold cutting, don't influence the pipe's material.

Auto feeding, cutting and beveling the pipe at the same time, cost effective.

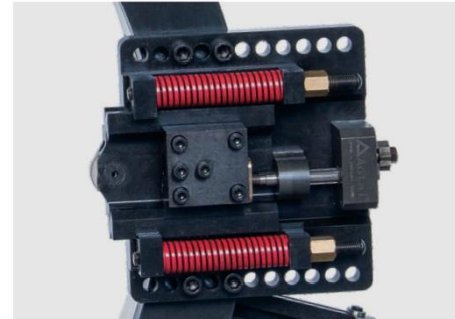
Widely used it on pipeline construction on site, beveling the all sizes pipe.

Variety of beveling shape: "U", "V", "J", double "V", and compound bevels.

Application: Petroleum, chemical, natural gas, power supply, boiler and nuclear power.

OPTIONALS

More solutions on the Tool Post



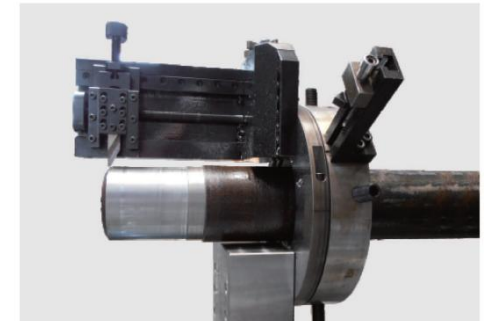
Tracing Tool Post



Counterboring Tool Post



Bridge Slide



Pipe Wall Axial Processing Post